

JIRRA

Product Spec V5



InfinitiStone®
Your Natural Choice in Stone Cladding

PRODUCT

Our JIRRA natural loose split granite veneers are perfect for your next residential or commercial stone feature wall project, suitable for both exterior and interior designs.

The durability of granite stone to readily adapt to various architectural designs, along with its pleasing earthy colour tones are advantages that have all worked together to maintain the stone's timeless beauty.

Pre-sawn external corners are available.

Design



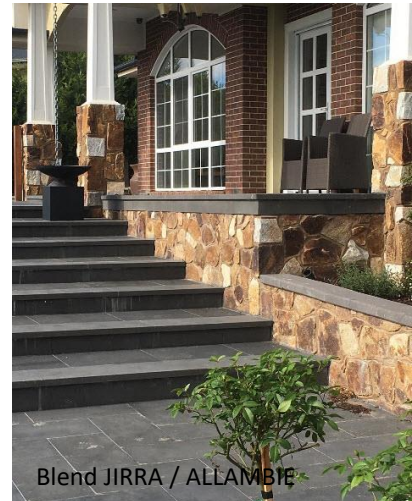
Typical Flat profiles



Typical Corner profiles

Dimension

Our natural granite are split at front and side faces with sawn backings, ensuring easier installation. Sizes are supplied in random irregular shaped stone veneers ranging from 150-400mm High x 150-400mm Long typically, thickness 20-40mm varying. **Corners available** – up to 450mm Long varying.



Weight

Approx. 70kg/m²

Packaging

Sold in minimum 5/15m²/Crate flats and
12Lm/Crate Corners

Colour

Varying browns and rusty tones
(ratio varies from crate to crate).



InfinitiStone
Your Natural Choice in Stone Cladding

INSTALLATION

Handy Tips

- All substrates must be free from dust and release agents prior to installation
- We recommend cladding onto brick, concrete or block walls only due to weight of stone. If weight restrictions apply and using other substrates, consider using InfinitiStone manufactured stone veneers in lieu or speak to your Engineer.
- Always wipe dust from back of stone pieces before applying adhesive over.
- If using pre-mix adhesives such as Mapei Kerabond Plus with Isolastic 50 or equivalent, ensure to wipe off excess from face of stone immediately with a wet sponge
- If using pre-mix grout such as Mapei Keracolor GG or equivalent, excess over face of stone can be left until 'dry to the touch' after which can be removed using a bristle brush. Never use a wet sponge as this will smear the stone face.
- External Corners should be installed first (where required), starting from bottom and alternating long and short returns as you work your way up the project wall
- Prior to installation, lay individual pieces onto a flat ground to create the random pattern you are happy with, then transfer onto your pre-prepared wall
- Work with a few crates at a time for best consistency in colour variation, profile and pattern
- View our Installation Guide for full installation details.

Cutting: Use a quality wet tile saw/cutter with a diamond blade or similar. If you do not have one, you can hire one from your local building equipment hire store. For Trimming you may use a hammer and stone chipper, this can also be used to split into smaller pieces for infills.

Joint Finish: We recommend grouted method.

Grouted: Width – 12mm and above

Depth – As desired,

Colour – As desired.



Sealing: Natural stone are generally porous and therefore sealing with appropriate sealers are recommended. This process limit discolouration and protects from serious common damage from liquids, including: salt attack, freeze-thaw damage, spalling and picture framing and inhibits the growth of mosses and moulds in the pores of the stone.

Important Note

While reasonable efforts have been made to ensure the contents of this publication are factually correct, InfinitiStone or DIYHQ does not accept responsibility for the accuracy or completeness of the contents and shall not be liable for any loss or damage that may occur directly through the use of, or reliance on, the contents of this publication.

SILICA DUST HAZARD - When natural stone or rock and other silica containing products are cut, crushed or sanded, dust is released. The very fine portion of the dust that is generated is known as respirable crystalline silica or silica dust. **Ensure to use necessary Personal Protective Equipment when cutting or shaping Natural or manufactured Stone Products.**